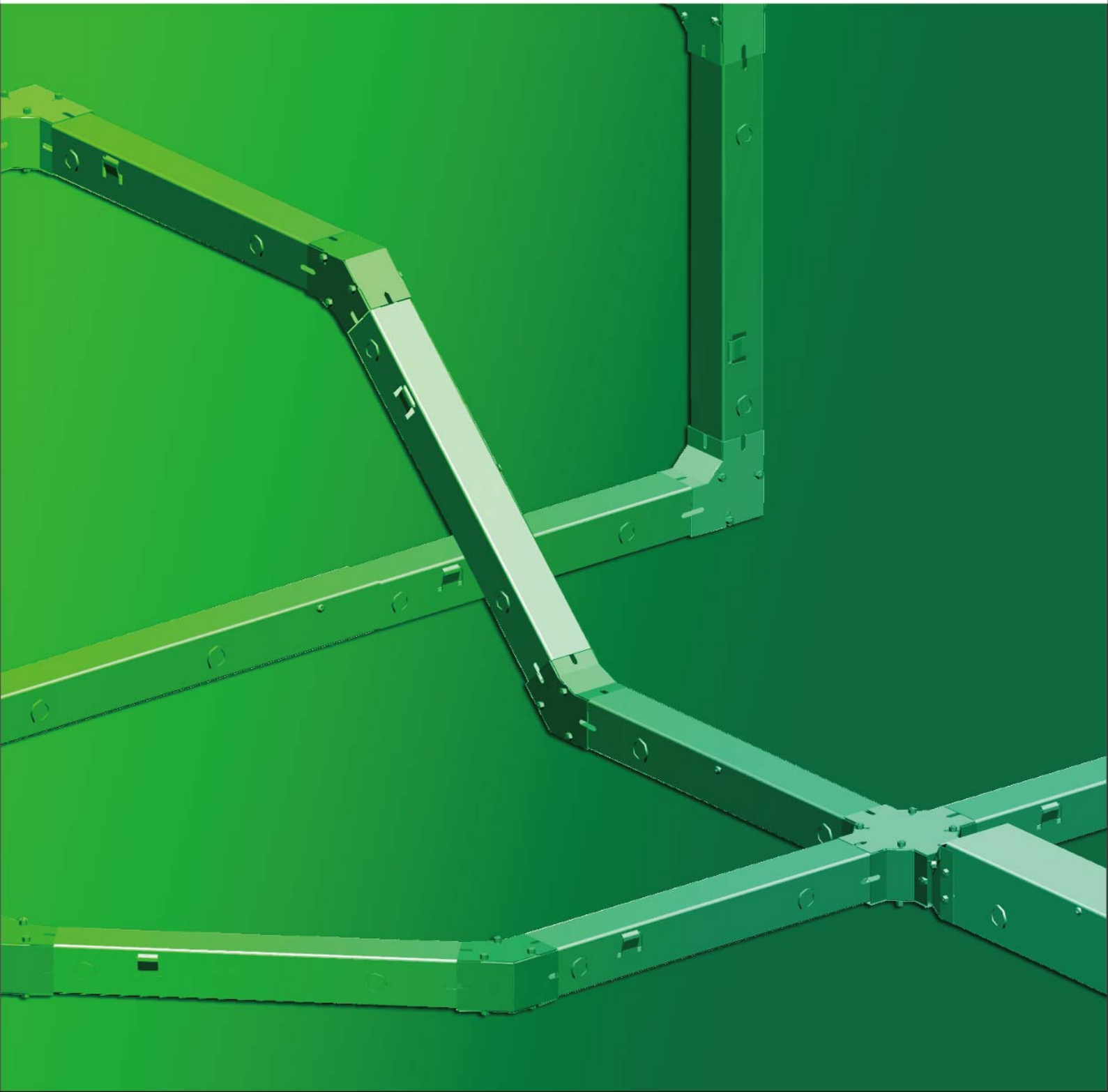
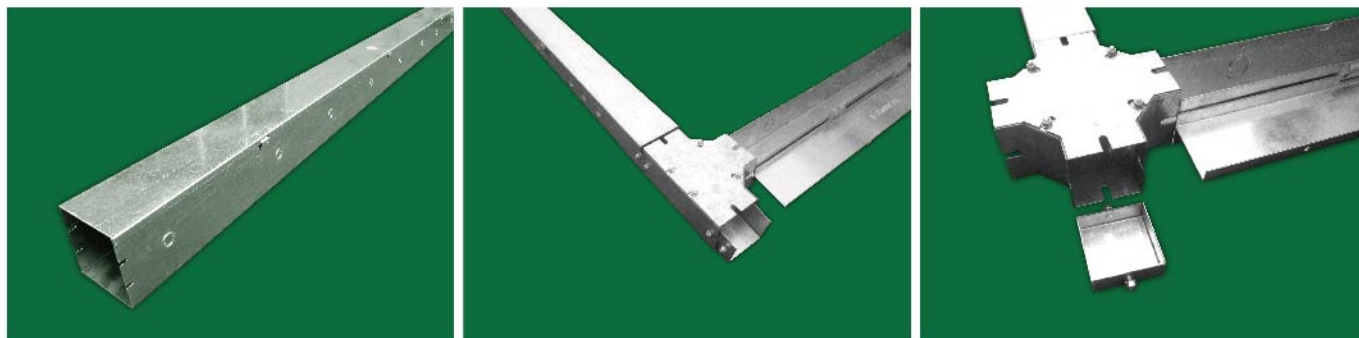


BW Series





Besca Wireway:

Application of Besca Wireway:

- Houses runs of control and power cable
- Used for cable and wire junction, distribution and termination

Standard of Besca Wireway:

- UL870 listed
- NEMA standard

Construction of Besca Wireway:

- Wireway body and cover are fabricated from code gauge steel
- Wireway body has mounting holes on the back
- Wireway is available with or without knockouts on the top and bottom sides
- Wireway fittings have no knockouts, ends are available with or without knockouts
- Wireway have cover which are attached with formed hinges on one side

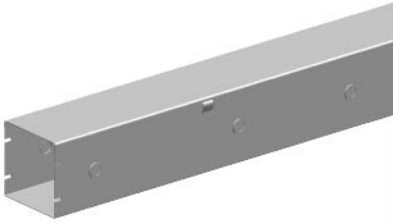
Standard finish of BESCA Wire Mesh Cable Tray as below, customize available:

- **G** ----- Pre-galvanized steel

Every piece of Besca Wireway has an average length of 2440 mm, 3048mm available as per the client requirements.

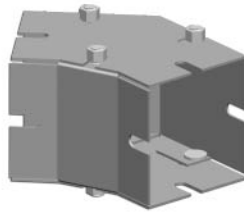
Suffix	Finish
G	Pre-Galvanized / PG / GI
H	Hot Dip Galvanized / HDG
P	Powder Coated

BW* Wireway



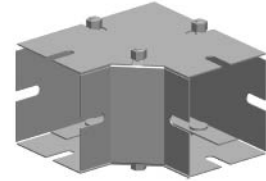
P/05

BW*-EF Elbow 45°



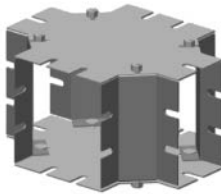
P/06

BW*-EN Elbow 90°



P/06

BW*-C Cross



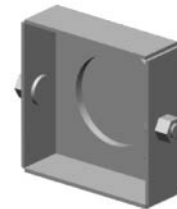
P/06

BW-R Reducer



P/06

BW*-E End Cap



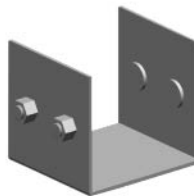
P/06

BW*-F Flange



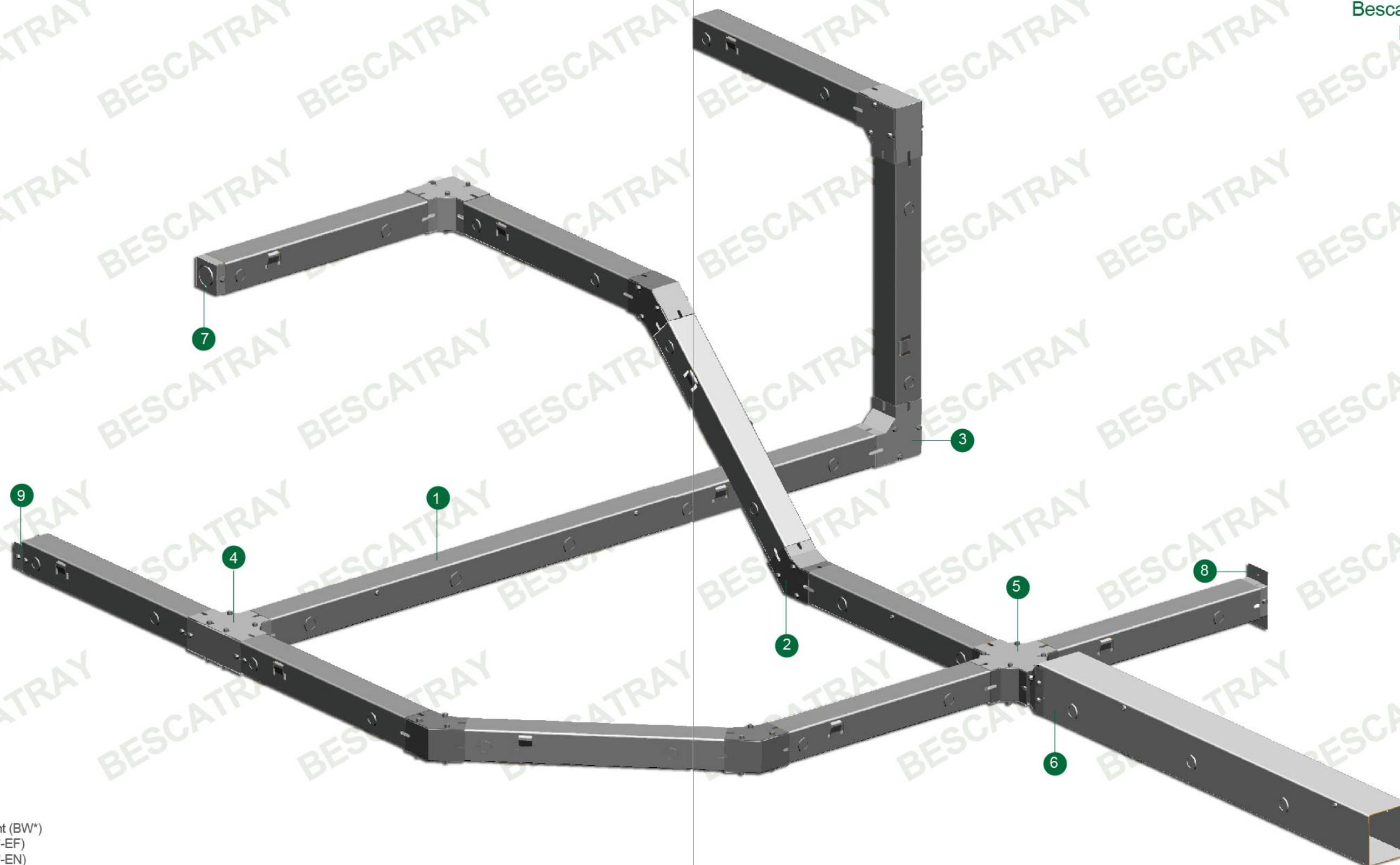
P/06

BW*-CC
Connect Coupler

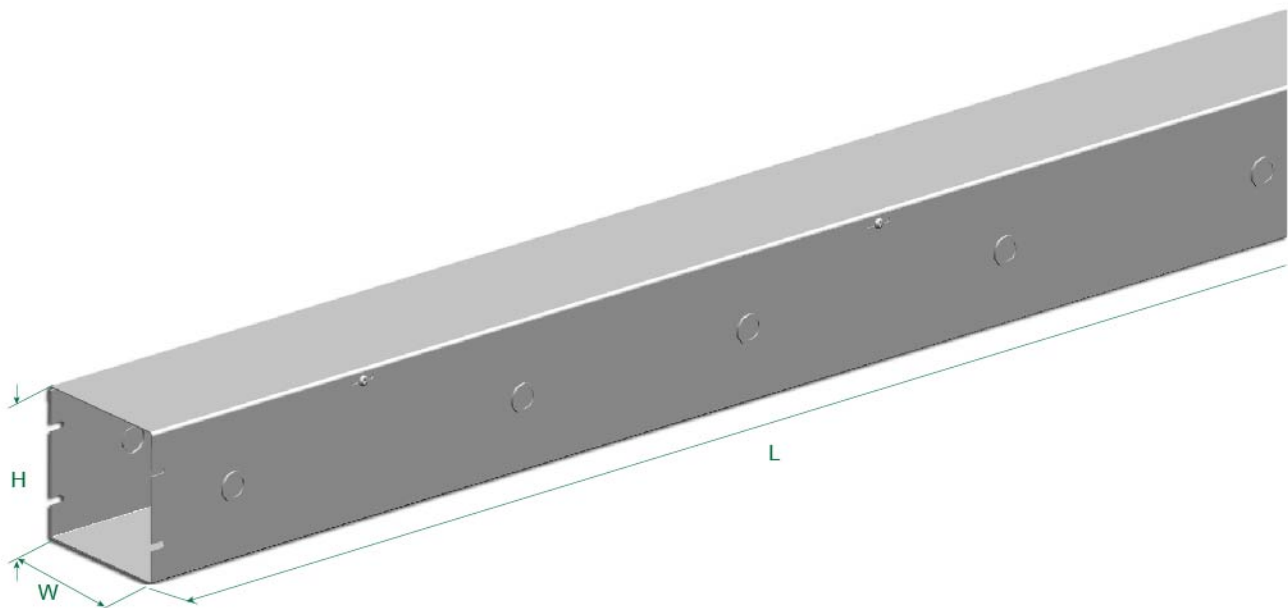


P/06

Besca Wireway: BW Series



- 1 Wireway Straight (BW*)
- 2 Elbow 45° (BW*-EF)
- 3 Elbow 90° (BW*-EN)
- 4 Tee (BW*-T)
- 5 Cross (BW*-C)
- 6 Reducer (BW*-R)
- 7 End Cap (BW*-E)
- 8 Flange (BW*-F)
- 9 Connect Coupler (BW*-SC)



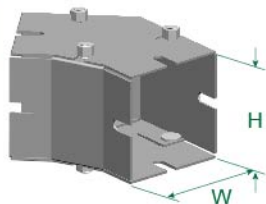
BW* Wireway

BW* Wireway

Ordering Code	W (mm)	H (mm)	L (mm)
BW1-64G	63.5	63.5	2440
BW2-102G	102	102	2440
BW3-152G	152	152	2440

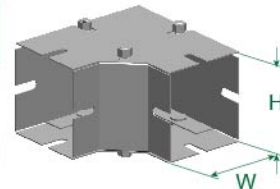
BW*-EF Elbow 45°

Ordering Code	W (mm)	H (mm)
BW1-EF64G	63.5	63.5
BW2-EF102G	102	102
BW3-EF150G	152	152



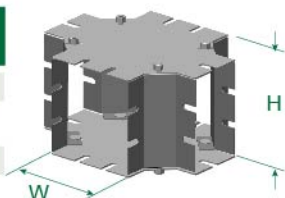
BW*-EN Elbow 90°

Ordering Code	W (mm)	H (mm)
BW1-EN64G	63.5	63.5
BW2-EN102G	102	102
BW3-EN152G	152	152



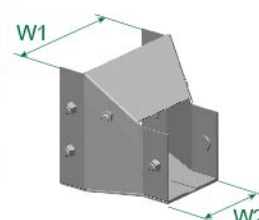
BW*-C Cross

Ordering Code	W (mm)	H (mm)
BW1-64G	63.5	63.5
BW2-102G	102	102
BW3-152G	152	152



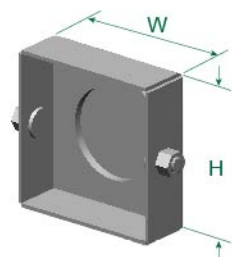
BW-R Reducer

Ordering Code	W1 (mm)	W2 (mm)
BW-R102064G	102	63.5
BW-R152064G	152	63.5
BW-R152102G	152	102



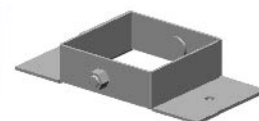
BW*-E End Cap

Ordering Code	W (mm)	H (mm)
BW1-E64G	63.5	63.5
BW2-E102G	102	102
BW3-E152G	152	152



BW*-F Flange

Ordering Code	W (mm)	H (mm)
BW1-F64G	63.5	63.5
BW2-F102G	102	102
BW3-F152G	152	152



BW*-CC Connect Coupler

Ordering Code	W (mm)	H (mm)
BW1-CC64G	63.5	63.5
BW2-CC102G	102	102
BW3-CC152G	152	152

